



This quick start guide provides first time setup instructions and other useful instructions for the epoc Host² (Motorola MC55A0). For complete user instructions, please refer to the epoc System Manual.

epoc Host² Components



Manufactured by:
Epocal Inc.
2060 Walkley Road
Ottawa, ON K1G 3P5 Canada
1.613.738.6192
1.613.738.6195 Fax

Distributed by:
Alere North America, LLC
30 S. Keller Road, Suite 100
Orlando, FL 32810 USA
1.877.441.7440 (US)
1.321.441.7200 (Outside US)

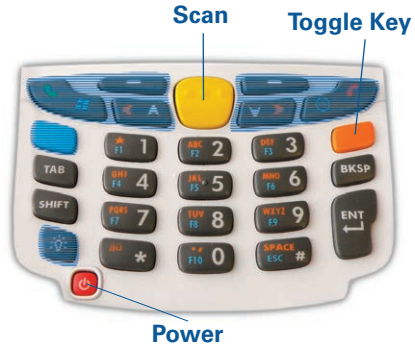
Authorized Representative:
Emergo Europe
Molenstraat 15, 2513 BH
The Hague, Netherlands
+31.70.345.8570
+31.70.346.7299 Fax



epoc Host² Numeric Keypad

- **Power** button turns device on and off. Holding the **Power** button for 5 seconds will reset the device.
- **Scan** key (and Scan Buttons on sides of Host) activates the barcode scanner.
- Alphanumeric keys default to numeric values. Pressing the **Toggle** key allows entry of alpha characters. (Key is illuminated and orange symbol appears on display when active). Pressing the **Toggle** key again returns key functions to numeric values.
- **Tab** and **Enter** keys navigate to the next editable field.
- **Backspace** key (BKSP) deletes entered characters.

Note: Shaded keys are not active



Prior to use . . .

Step 1: Charge the epoc Host²

Before using the epoc Host², charge its battery as follows:

1. Connect the epoc Reader power supply to the power jack on the back of the Reader.
2. Insert the epoc Host² into the epoc Reader's pivot slot as shown. The initial charge will take approximately eight hours.





- A blinking Amber battery LED shows that the epoc Host² is charging.
- A solid Amber battery LED shows that the epoc Host² is fully charged.

Step 2: Connect to your Wi-Fi Network

NOTE: Please read Step 2 in its entirety before starting. It may be necessary to contact your facility's Information Technology department to obtain the proper Wireless connection and security settings.

1. Run Motorola Wireless Fusion.

- Turn on the epoc Host² by pressing the **Power** button. 
- At the login screen, scan or enter the word **"administrator"** into the User ID and Password fields.

To scan, aim the Barcode Scanner at the barcode and press the **Scan** key. 



- Exit the epoc Host² application by tapping **"Tools"**, then **"Exit"** from the menu.

For networks that broadcast their SSID:

- Tap the **"Fusion"** on-screen icon and select **"Find WLANS"** from the menu.
- Tap and hold desired WLAN and select **"Create Profile"** from the menu.
- Proceed to **Configure the Wi-Fi Network Profile** as described on the next page, starting with the 3rd bullet. Typically, your settings will be already entered.

For networks that DO NOT broadcast their SSID:

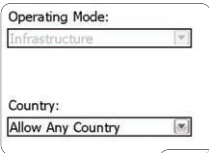
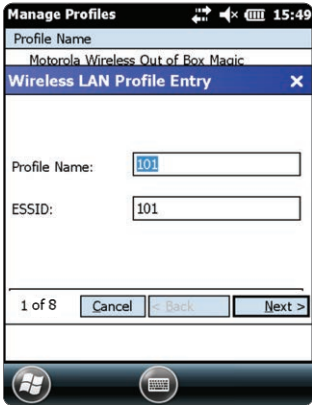
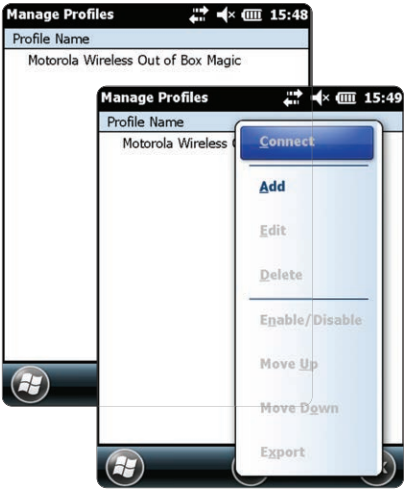
- Tap the **"Fusion"** on-screen icon and select **"Manage Profiles"** from the menu.
- Proceed to **Configure the Wi-Fi Network Profile** as described on the next page. You will need to enter your settings manually.



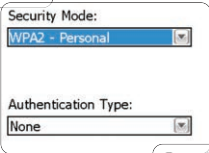
Configure the Wi-Fi Network Profile

- Tap and hold the screen to bring up the menu; then tap on **"Add"**.
- Enter correct Profile Name and Network Name (ESSID), and then tap **"Next"**.
- Continue entering the correct network security settings on the screens that follow (Screenshots 2-8) by tapping **"Next"**, then **"Save"**.

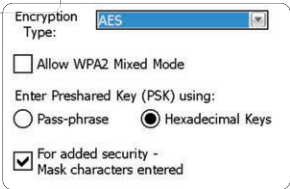
NOTE: Screenshots are examples only.



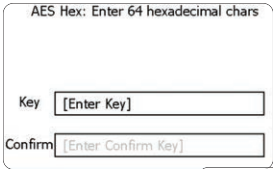
2 of 8



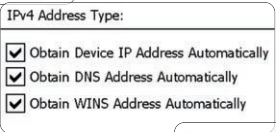
3 of 8



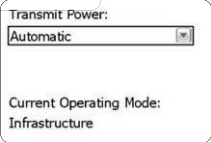
4 of 8



5 of 8



6 of 8



7 of 8



- When finished, tap and hold on the network name, then tap **“Connect”**.



- Tap **“OK”** on bottom of the screen to return to the “Today” screen..
- If required, tap on the **“Fusion”** icon and select **“Options”** to configure the appropriate wireless network options.

NOTE: On some networks, it may be required to disable 802.11d in “Regulatory” options.




2. Reset the epoc Host².

- Perform a warm reset by holding down the power button  for 5 seconds.


Step 3: Connect to the epoc Enterprise Data Manager (EDM)

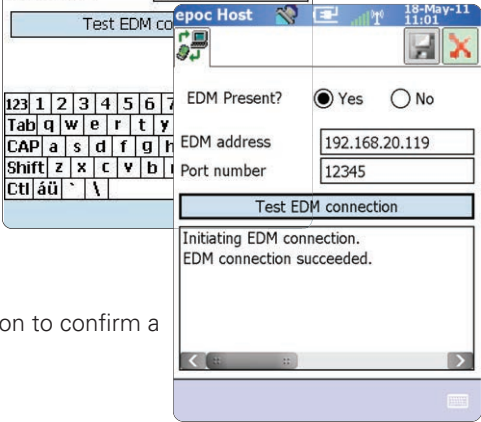
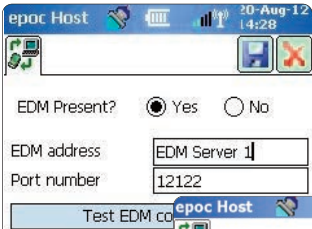
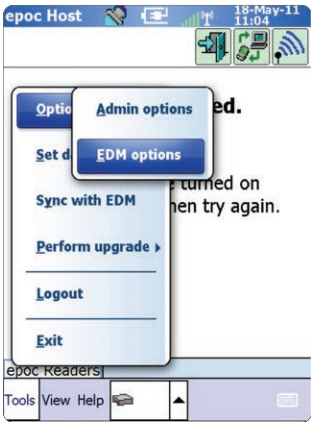
1. Configure EDM options

- Turn on the epoc Host² by pressing the **Power** button. 
- At the login screen, scan or enter the word **“administrator”** into the **User ID** and **Password** fields. (Set date and time if prompted)

To scan, aim the Barcode Scanner at the barcode and press the **Scan** key. 



- Select **“Tools”** then **“Options”**, then **“EDM Options”** from the menu.
- Set **“EDM Present?”** to **“Yes”**, and enter the correct EDM address and port number, then tap the disk symbol. 



2. Confirm EDM Connection

- Tap the **“Test EDM connection”** button to confirm a successful EDM connection.


The epoc Host² is now ready for use.

NOTE: Refer to the epoc System Manual for instructions on updating the epoc Host Software.

NOTE: Before placing this unit into service, consult your facility's internal quality control procedures and regulatory requirements.

Resetting the epoc Host²

There are two reset functions – warm reset and cold reset. In the rare event that the epoc Host² stops responding or is not functioning properly, perform a warm reset. If the epoc Host² still does not respond, perform a cold reset. Data will **not** be lost with either procedure, which takes approximately one minute.

- Perform a **warm reset** by holding down the power button  for 5 seconds.
- Perform a **cold reset** by simultaneously holding down the power button, the “1” key, and the “9” key, and then release.

Installing the Cradle


In the event that the cradle becomes separated from the epoc Host², position the cradle as shown, and press the two together until both cradle locking tabs snap into the pockets on the side of the Host.

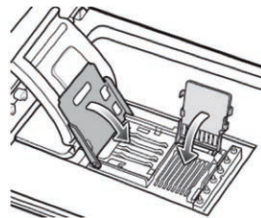
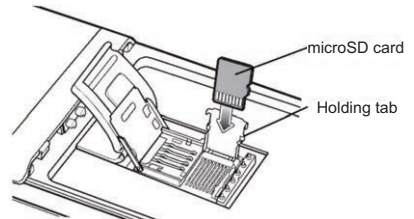
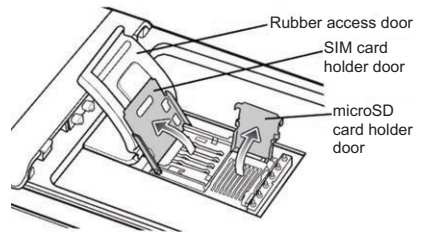
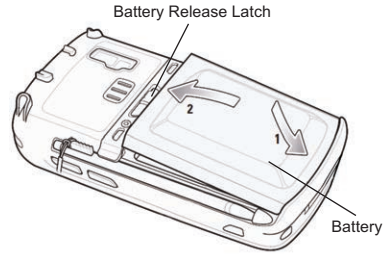


How to install or replace the microSD Card on the epoc Host²

The SD card slot is located on the back of the epoc Host² under the battery compartment.

NOTE: It is not necessary to remove the plastic cradle.

1. Press and release the **Power** button to suspend the epoc Host². 
2. Use your finger or stylus to slide the battery latch to the right releasing the battery. The battery ejects slightly.
3. Lift the battery from the device.
4. Lift the rubber access door and slide SIM card holder door to unlock.
5. Lift SIM card holder door (if it exists), then lift the microSD card holder door.
6. If removing microSD card, simply remove the microSD card from holder.
7. Insert the microSD card, with gold bars facing out, into the card holder door ensuring that the card slides into the holding tabs on each side of the door.
8. Then close microSD card door and slide SIM card holder door to lock position.
9. Close rubber access door.
10. Insert the battery; bottom first, into the battery compartment in the back of the epoc Host².
11. Press the battery down into the battery compartment until the battery release latch snaps into place.



NOTE: To upgrade the epoc Host² software from an SD card, refer to the epoc System Manual.